



IRIS
CERAMICA
GROUP

LONDON

Ceramics: Neverending Artworks

Artworks Description

Michele De Lucchi



Michele De Lucchi, con Elisa Gargan
Vaso con decoro bianco e nero,
Ceramiche San Marco (poi Produzione Privata),
1987, Ceramica bianca

Biography

An Italian designer, architect and academic born in Ferrara in 1951, De Lucchi graduated with a degree in architecture in Florence before coming into contact with the radical design movement and founding the Cavart Group, inspired by its principles. He then went to Milan, where he met Ettore Sottsass in 1979, following him in the Memphis Group before setting up his own studio in 1980. At the same time, he established a close relationship with Centrokappa and Alchimia, But it was Sottsass who introduced him into the most important circles of Italian industrial design: over the next decade, he worked with Olivetti, for whom he designed Synthesis furnishings, before becoming head of the company's design office. In 1990 he founded Produzione Privata, a brand that produces uncommissioned items, before turning to exhibition design. Since December 2017 Michele De Lucchi has been the new editor-in-chief of Domus magazine, where he focuses on various different disciplines, combining design, architecture and contemporary art with anthropology, economics and philosophy, investigating the meaning and value of things beyond the relationship between 'man and object'.

Michele De Lucchi



Michele De Lucchi, con Elisa Gargan
Vaso con decoro bianco e nero, Ceramiche San Marco (poi Produzione Privata),
1987, Ceramica bianca

Biography

An Italian designer, architect and academic born in Ferrara in 1951, De Lucchi graduated with a degree in architecture in Florence before coming into contact with the radical design movement and founding the Cavart Group, inspired by its principles. He then went to Milan, where he met Ettore Sottsass in 1979, following him in the Memphis Group before setting up his own studio in 1980. At the same time, he established a close relationship with Centrokappa and Alchimia, But it was Sottsass who introduced him into the most important circles of Italian industrial design: over the next decade, he worked with Olivetti, for whom he designed Synthesis furnishings, before becoming head of the company's design office. In 1990 he founded Produzione Privata, a brand that produces uncommissioned items, before turning to exhibition design. Since December 2017 Michele De Lucchi has been the new editor-in-chief of Domus magazine, where he focuses on various different disciplines, combining design, architecture and contemporary art with anthropology, economics and philosophy, investigating the meaning and value of things beyond the relationship between 'man and object'.

Aldo Cibic



Aldo Cibic, Italian landscape, 2014,
Oggetti in ceramica a colaggio con ri_nitura a mano,
cm. 39,9 x 7,9 x 14,6

Biography

Aldo Cibic, founder of Cibicworkshop, was born in Schio (Vicenza) in 1955. As a partner in Sottsass Associati, he became a founding member of the Memphis Group in 1981.

His projects "Microrealities" (2004) and "Rethinking Happiness" (2010) were presented at the Architecture Biennale in Venice.

Cibicworkshop is a multidisciplinary research centre for alternative sustainable architecture, interior decorating and design projects with a focus on territorial enhancement and definition of a new cultural, emotional and environmental consciousness.

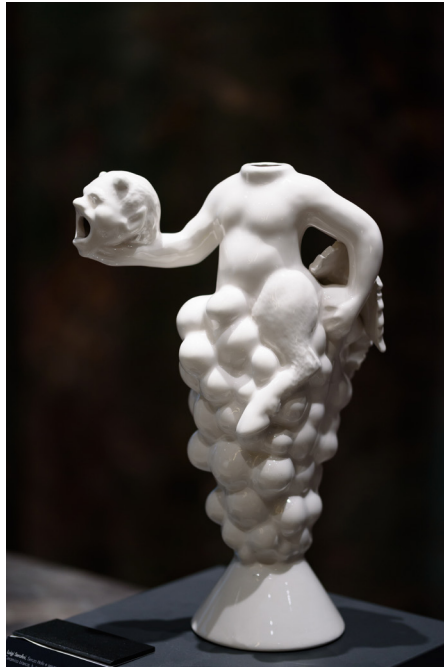
Cibic is an honorary professor at Tongji University in Shanghai.

In 2019 he was selected as a top-level international expert by SAFEA (State Administration of Foreign Experts Affairs of the People's Republic of China).

In 2021 he was appointed honorary professor of urban studies at Shanghai Academy of Social Sciences.

Architecture magazine Domus included Aldo Cibic in its guide to the "100+ best architecture firms 2019", identifying the world's best architects standing out for their cultural innovation.

Luigi Serafini



Luigi Serafini, Senza titolo e senza testa, 1987,
Ceramica bianca,
h. cm.29

Biography

Born in Rome in 1949, Serafini is an Italian artist, architect and designer known for his mysterious and alienating works such as the Codex Seraphinianus (1981), a 360-page book consisting of a long series of curious graphic metamorphoses.

Like an encyclopaedia written in an indecipherable hand, the volume is a fantastic, visionary reinterpretation of subjects such as zoology, botany, mineralogy, ethnography, physics, technology, architecture and more.

George Sowden



George Sowden, Vaso, 1991,
Ceramica bianca,
h. cm.32

Biography

Sowden is a designer and product developer born in Leeds, in the United Kingdom, in 1942. He studied architecture at Gloucestershire College of Art in the '60s, then moved to Milan in 1970, where he started working with Ettore Sottsass and Olivetti. He co-founded the Memphis Group in 1981, setting up his own design studio in the same year, through which he worked as an industrial design consultant even while continuing to perform his research work. He founded the SOWDEN brand in 2010. Sowden's interest in working with artisans and small enterprises, and in the practice of design and decoration, began in the '70s and still continues today. In 1990 his experimentation and research were the subject of an exhibition entitled "George J. Sowden Designing 1970–1990", organised by the Musée des Arts décoratifs et du Design in Bordeaux.

Peter Shire



Peter Shire, Mexican dress bell gardens, 2004,
Ceramica e metallo,
cm. 60x30

Biography

Peter Shire was born in 1947 in Echo Park, Los Angeles, CA, where he still lives and works. After graduating from Chouinard Art Institute in Los Angeles, the artist began a long and successful career, holding solo shows on three continents, from the biggest US cities to Milan, Paris, Tokyo and Sapporo, with works exhibited in museums and public collections all over the world (MOMA – New York, Victoria and Albert Museum - London, The Israel Museum, Art Institute of Chicago). His studio in Los Angeles has led the way and inspired reflection world-wide since 1972. When Peter Shire came to Milan in the '80s, he became a prominent member of the Memphis Group, establishing a new vocabulary of forms and surfaces, technology and aesthetics, extending his great freedom and subtle irony to the creation of ceramics, furnishings, glass, toys and large-scale installations.

Peter Shire



Peter Shire, Mini peach stack, 2004,
Ceramica e metallo,
cm. 75x37

Biography

Peter Shire was born in 1947 in Echo Park, Los Angeles, CA, where he still lives and works. After graduating from Chouinard Art Institute in Los Angeles, the artist began a long and successful career, holding solo shows on three continents, from the biggest US cities to Milan, Paris, Tokyo and Sapporo, with works exhibited in museums and public collections all over the world (MOMA – New York, Victoria and Albert Museum - London, The Israel Museum, Art Institute of Chicago). His studio in Los Angeles has led the way and inspired reflection world-wide since 1972. When Peter Shire came to Milan in the '80s, he became a prominent member of the Memphis Group, establishing a new vocabulary of forms and surfaces, technology and aesthetics, extending his great freedom and subtle irony to the creation of ceramics, furnishings, glass, toys and large-scale installations.

Nathalie Du Pasquier



Nathalie du Pasquier, Vaso, 1991,
Ceramica colorata,
h. cm.40

Biography

Born in Bordeaux, France in 1957, Du Pasquier has lived and worked in Milan since 1979. She worked as a designer specialising in decorated surfaces until 1986 and was a founding member of the Memphis Group, for which she designed fabrics, carpets, furnishings and a variety of items; when the group split up in 1987, she turned primarily to painting.

Du Pasquier has exhibited her work in countless cities; recent exhibitions include Kunsthalle Wien, ICA Philadelphia, Camden Arts Centre London, MGLC Ljubljana, and GfZK Leipzig. A major solo show of her work curated by Luca Lo Pinto is currently under way at MACRO in Rome.

Matteo Thun



Matteo Thun, TEJE, 1981,
Vaso da fiori in ceramica decorata,
cm. Ø 23 / cm. h. 24

Biography

Thun is an Italian architect and designer who was born in 1952 and grew up in Bolzano, in the bilingual Italian and German-speaking region of Alto Adige. Thun studied under the guidance of Oskar Kokoschka and Emilio Vedova at the Salzburg International Summer Academy of Fine Arts and graduated from Florence University with the degree in architecture in 1975 under Adolfo Natalini. He moved to Milan in 1978, where he met Ettore Sottsass and began working in his studio. In 1981 he became a co-founder of the Memphis Group; the following year, Universität für angewandte Kunst of Vienna appointed him professor of Industrial Design and Ceramic Design. He opened his own studio in Milan in 1984. In 2001 he founded Matteo Thun + Partners, a multicultural architecture and design studio based in Milan and Shanghai with a focus on the aesthetic durability, technological longevity and future durability of buildings and products. He is a three-time winner of the ADI Compasso d'Oro Award for Excellence in Design, in addition to the Good Design Award and the Simon Taylor Award for Lifetime Achievement, both in 2011. He was included in the Interior Design Hall of Fame in New York in December 2004 and is a member of RIBA, the Royal Association of British Architects.

Luigi Serafini



Luigi Serafini, Nessi, 1987,
Ceramica,
cm.20x30

Biography

Born in Rome in 1949, Serafini is an Italian artist, architect and designer known for his mysterious and alienating works such as the Codex Seraphinianus (1981), a 360-page book consisting of a long series of curious graphic metamorphoses.

Like an encyclopaedia written in an indecipherable hand, the volume is a fantastic, visionary reinterpretation of subjects such as zoology, botany, mineralogy, ethnography, physics, technology, architecture and more.

Martine Bedin



Martine Bedin, Vaso, 2007,
Ceramica,
cm. h.30 diametro 30

Biography

A designer, artist, architect and teacher, Bedin was born in Bordeaux in 1957 and studied architecture at the École d'architecture in Paris. In 1978 she was awarded a scholarship to go to Florence, where she met the members of the Radical Architecture movement: the founders of Alchimia, Superstudio and Archizoom Associati. Superstudio founder Adolfo Natalini invited her to exhibit her "decorated house" at the Triennale in Milan in 1979, where she met Michele De Lucchi and Ettore Sottsass. In the early '80s she spent two years in Sottsass's studio, while also working on her own projects and writing for a French architecture and design magazine. She was among the co-founders of the Memphis Group in 1981. Bedin works with a variety of materials, including marble, wood, metal and ceramic; her works are displayed in important museums and private collections, including Musée des Arts Décoratifs in Paris, the Victoria & Albert Museum in London, and the Manufacture Nationale de Sèvres.

Ettore Sottsass



Ettore Sottsass, The indian memory, 1993,
Ceramica colorata,
diametro cm.30 ca.

Biography

Born in Innsbruck in 1917, Sottsass studied architecture at Turin Polytechnic, graduating in 1939 and opening his first design studio in Milan in 1947, working with Giuseppe Pagano.

His most important project was the Elea 9003 mainframe computer (1959), winner of the 1959 Compasso D'Oro.

In 1980 he founded Sottsass Associati with Aldo Cibic, Matteo Thun, Marco Zanini and Marco Marabelli. In 1988 he created Terrazzo, a magazine produced with Barbara Radice, Christoph Radl, Anna Wagner and Santi Caleca. Numerous solo shows have been held of his work.

He passed away on 31 December 2007 at the age of 90.

Ettore Sottsass



Ettore Sottsass, The indian memory, 1993,
Ceramica colorata,
diametro cm.30 ca.

Biography

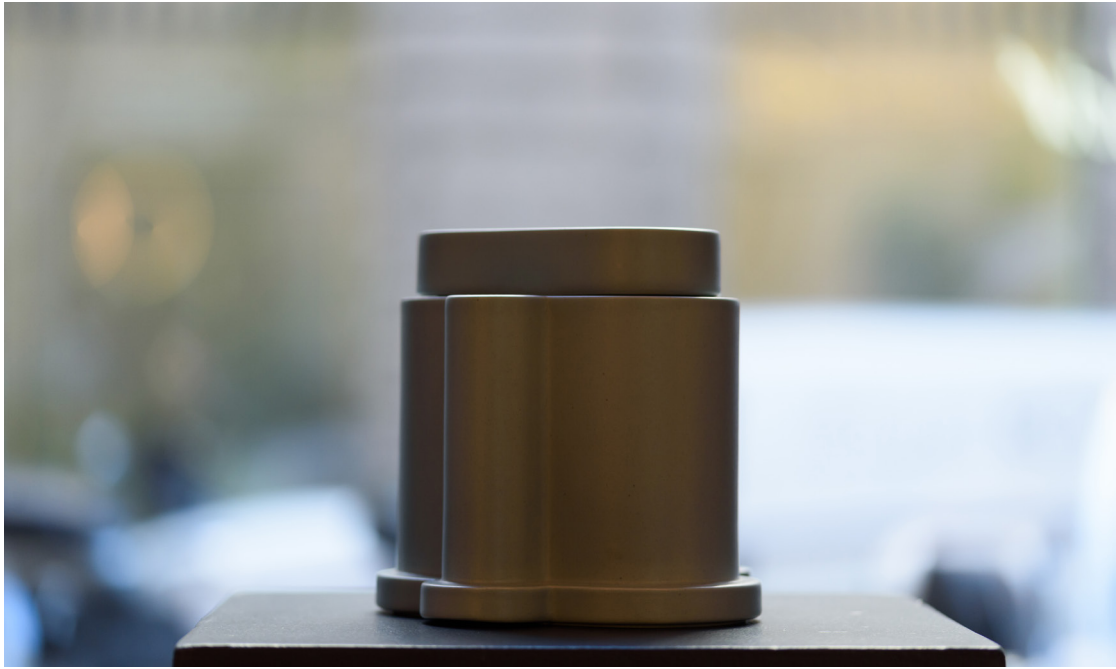
Born in Innsbruck in 1917, Sottsass studied architecture at Turin Polytechnic, graduating in 1939 and opening his first design studio in Milan in 1947, working with Giuseppe Pagano.

His most important project was the Elea 9003 mainframe computer (1959), winner of the 1959 Compasso D'Oro.

In 1980 he founded Sottsass Associati with Aldo Cibic, Matteo Thun, Marco Zanini and Marco Marabelli. In 1988 he created Terrazzo, a magazine produced with Barbara Radice, Christoph Radl, Anna Wagner and Santi Caleca. Numerous solo shows have been held of his work.

He passed away on 31 December 2007 at the age of 90.

Ettore Sottsass



Ettore Sottsass, The Indian Memory, 1993,
Ceramica colorata,
diametro cm.30 ca.

Biography

Born in Innsbruck in 1917, Sottsass studied architecture at Turin Polytechnic, graduating in 1939 and opening his first design studio in Milan in 1947, working with Giuseppe Pagano.

His most important project was the Elea 9003 mainframe computer (1959), winner of the 1959 Compasso D'Oro.

In 1980 he founded Sottsass Associati with Aldo Cibic, Matteo Thun, Marco Zanini and Marco Marabelli. In 1988 he created Terrazzo, a magazine produced with Barbara Radice, Christoph Radl, Anna Wagner and Santi Caleca. Numerous solo shows have been held of his work.

He passed away on 31 December 2007 at the age of 90.

Ettore Sottsass



Ettore Sottsass, The indian memory, 1993,
Ceramica colorata,
diametro cm.30 ca.

Biography

Born in Innsbruck in 1917, Sottsass studied architecture at Turin Polytechnic, graduating in 1939 and opening his first design studio in Milan in 1947, working with Giuseppe Pagano.

His most important project was the Elea 9003 mainframe computer (1959), winner of the 1959 Compasso D'Oro.

In 1980 he founded Sottsass Associati with Aldo Cibic, Matteo Thun, Marco Zanini and Marco Marabelli. In 1988 he created Terrazzo, a magazine produced with Barbara Radice, Christoph Radl, Anna Wagner and Santi Caleca. Numerous solo shows have been held of his work.

He passed away on 31 December 2007 at the age of 90.

Ettore Sottsass



Ettore Sottsass, The indian memory, 1993,
Ceramica colorata,
diametro cm.30 ca.

Biography

Born in Innsbruck in 1917, Sottsass studied architecture at Turin Polytechnic, graduating in 1939 and opening his first design studio in Milan in 1947, working with Giuseppe Pagano.

His most important project was the Elea 9003 mainframe computer (1959), winner of the 1959 Compasso D'Oro.

In 1980 he founded Sottsass Associati with Aldo Cibic, Matteo Thun, Marco Zanini and Marco Marabelli. In 1988 he created Terrazzo, a magazine produced with Barbara Radice, Christoph Radl, Anna Wagner and Santi Caleca. Numerous solo shows have been held of his work.

He passed away on 31 December 2007 at the age of 90.

Ettore Sottsass



Ettore Sottsass, The indian memory, 1993,
Ceramica colorata,
diametro cm.30 ca.

Biography

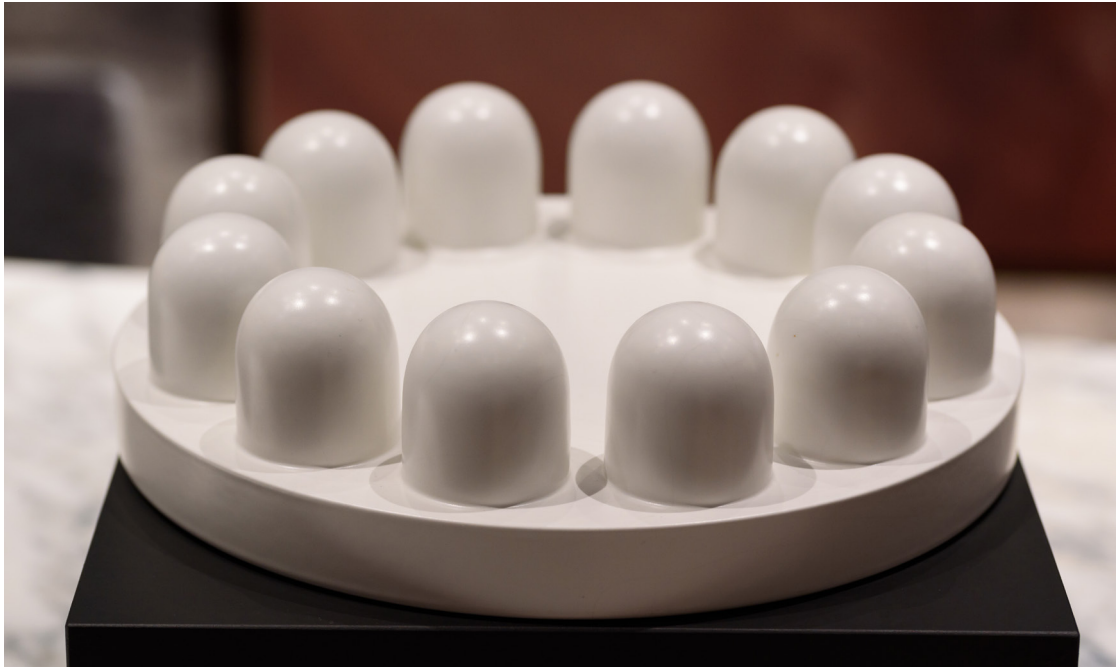
Born in Innsbruck in 1917, Sottsass studied architecture at Turin Polytechnic, graduating in 1939 and opening his first design studio in Milan in 1947, working with Giuseppe Pagano.

His most important project was the Elea 9003 mainframe computer (1959), winner of the 1959 Compasso D'Oro.

In 1980 he founded Sottsass Associati with Aldo Cibic, Matteo Thun, Marco Zanini and Marco Marabelli. In 1988 he created Terrazzo, a magazine produced with Barbara Radice, Christoph Radl, Anna Wagner and Santi Caleca. Numerous solo shows have been held of his work.

He passed away on 31 December 2007 at the age of 90.

Ettore Sottsass



Ettore Sottsass, *The Indian Memory*, 1993,
Ceramica colorata,
diametro cm.30 ca.

Biography

Born in Innsbruck in 1917, Sottsass studied architecture at Turin Polytechnic, graduating in 1939 and opening his first design studio in Milan in 1947, working with Giuseppe Pagano.

His most important project was the Elea 9003 mainframe computer (1959), winner of the 1959 Compasso D'Oro.

In 1980 he founded Sottsass Associati with Aldo Cibic, Matteo Thun, Marco Zanini and Marco Marabelli. In 1988 he created *Terrazzo*, a magazine produced with Barbara Radice, Christoph Radl, Anna Wagner and Santi Caleca. Numerous solo shows have been held of his work.

He passed away on 31 December 2007 at the age of 90.

Marco Zanini



Marco Zanini, Vaso, 1998,
Ceramica dorata,
h. cm.20

Biography

Born in Trento in 1954, Zanini graduated with a degree in architecture from Florence University in 1976. He started working with Ettore Sottsass in Milan in 1977. Zanini co-founded Memphis in 1981 and has designed items for all its collections, including ceramics, jewellery, furniture and blown glass objects. He and Ettore Sottsass founded Sottsass Associati, where he held the position of Design Manager in numerous projects. Zanini's works are exhibited in numerous museums and private collections. He holds frequent conferences on industrial design. Zanini now lives and works in San Paolo, Brazil.

Andrea Branzi



Andrea Branzi, *Bosco*, 2007,
Ceramica bianca,
cm. 50x10x50

Biography

An architect and designer born in Florence in 1938, Branzi has lived and worked in Milan since the mid-70s. Between 1964 and 1974 he took part in Archizoom Associati, the first internationally renowned avant-garde architecture group. Co-founder of Domus Academy, the world's first international post-graduate school of design, in 1982, he has received three Compasso d'Oro awards, including one for lifetime achievement in 1987, in addition to honorary degree in Industrial Design from La Sapienza University in Rome in 2008. In the same year, he was appointed an Honorary Member of the Royal Designers for Industry of London. Author of several books about the history and theory of design, Andrea Branzi was an Ambassador for Expo Milano 2015.

Andrea Branzi



Andrea Branzi, Portale 2, 2007,
Ceramica bianca,
cm. 50x10x50

Biography

An architect and designer born in Florence in 1938, Branzi has lived and worked in Milan since the mid-70s. Between 1964 and 1974 he took part in Archizoom Associati, the first internationally renowned avant-garde architecture group. Co-founder of Domus Academy, the world's first international post-graduate school of design, in 1982, he has received three Compasso d'Oro awards, including one for lifetime achievement in 1987, in addition to honorary degree in Industrial Design from La Sapienza University in Rome in 2008. In the same year, he was appointed an Honorary Member of the Royal Designers for Industry of London. Author of several books about the history and theory of design, Andrea Branzi was an Ambassador for Expo Milano 2015.



**IRIS
CERAMICA
GROUP**

LONDON